



**FOR IMMEDIATE RELEASE**

## **Right Hemisphere Deep Exploration 6 Ships, Early Users See Great Value in UI and Rendering Enhancements**

**Pleasanton, CA — September 23, 2009** — With early praise from its first users, Right Hemisphere® today announced its new Deep Exploration™ 6 software is now shipping. Introduced in June, the new version includes a highly configurable workflow-oriented user interface (UI); improved ability to view, select and navigate large and complex 3D models; a new XML file format to facilitate its integration with enterprise systems; and a completely new photorealistic rendering engine which employs high dynamic range (HDR) imaging technology.

The first customers to work with the new software have been quick to comment on the revamped UI. For example, long time Deep Exploration user and Managing Director at Urban Voyage Richard Elliott said, “We’ve been beta testers for the software and immediately noticed the smart UI changes. There are a lot of tools in Deep Exploration and Right Hemisphere has done an excellent job of reorganizing them so that it’s easier to find the tools you need when you need them. It’s also quite simple to customize the layout to suit your own workflow. At Urban Voyage, our 3D artists are pushing the limits on what’s possible using 3D technology and Right Hemisphere represents the best in creative 3D authoring and translation solutions available today.”

RIGHT HEMISPHERE INC.

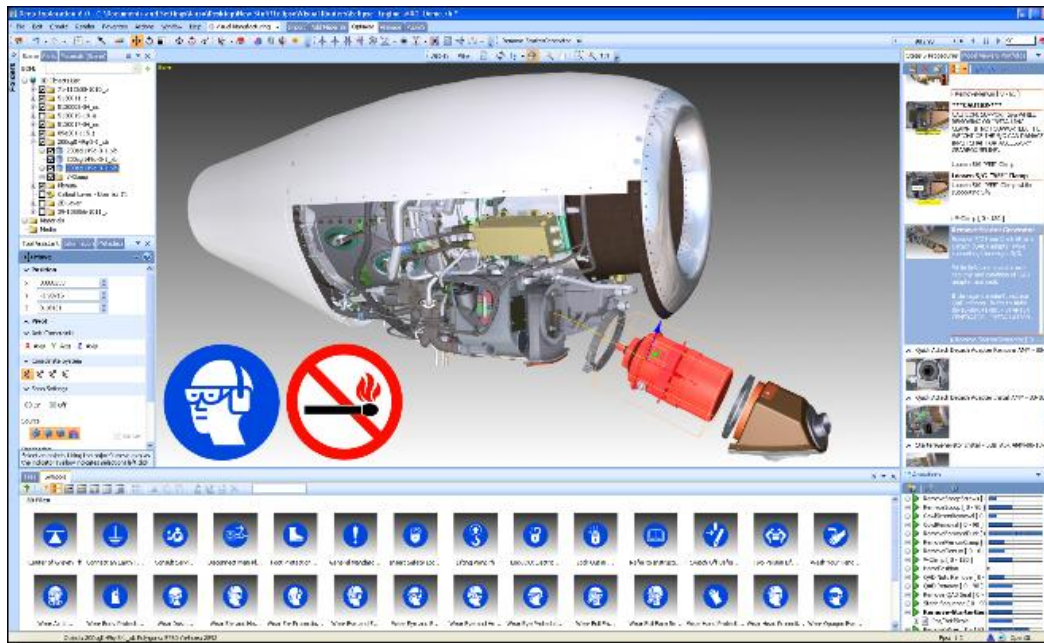
3825 HOPYARD ROAD, SUITE 150

PLEASANTON, CA 94588, USA

PH: +1 925 460 8133

FAX: +1 925 460 8136

WWW.RIGHTHEMISPHERE.COM



The new UI comes with user configurable screen layouts and defined workflow templates to simplify use and optimize productivity.

Other users have communicated their appreciation for the combined data management and rendering capabilities now available in the new release. According to Armstrong White CGI Supervisor Joseph Brancik, "We've been using Right Hemisphere's Deep Exploration software for years and they have really upped the game with their new HDRI renderer. It looks fantastic. With Deep Exploration 6 you can create great renders. The tool set has also increased tenfold and users have tons of window layout flexibility. With all of the new translators and the new flex web applications in Deep Exploration 6, we can now create real-time content with no compromises."



Deep Exploration 6 comes with a new, more powerful, yet easy to use rendering engine for the creation of high-resolution photorealistic images.

Virtual Photographer, 3D Artist and Owner of Beyond Real Chris Iorillo added, “Every time I push the render button with Deep Exploration 6, it’s like Christmas morning. I’m very pleased with everything. As far as a soup to nuts package for data translation and rendering, I haven’t seen anything like Deep Exploration 6. As far as I know, this is the only software application that allows you to draw a line and add luminosity to it with such ease. It’s fabulous.”

“Deep Exploration is a key part of our production pipeline here at Global Majic and we recommend it to all our clients. I personally use it every day to read, prepare, and translate client CAD files for importing into our RealTimeStudio visualization system,” said Dan Stiles, Vice President of Content Development at Global Majic Software, Inc. “During a deadline crunch – which we experience often – one of the things we value most is reliability and stability. The software must work as expected in order to meet the schedule. This latest version of Deep Exploration has flawlessly ripped through everything we’ve thrown at it. Once again, another excellent and dependable release with a super feature set that is second to none.”



Right Hemisphere's Deep Exploration 6 software is available immediately and in a variety of different license types. For more information on the software, its pricing and licensing options, please visit [www.righthemisphere.com](http://www.righthemisphere.com).

### **About Right Hemisphere**

Right Hemisphere is the standard for Visual Enterprise solutions. The company's software and solutions help Global 1,000 manufacturers to optimize their mission critical business processes such as engineering, manufacturing, service and support, training and sales and marketing. The software does this by unifying visual product information with relevant business data readily available in corporate CAD, PLM, and ERP systems. It then automatically delivers this intelligent product information into commonly used business documents, file formats and even directly into business applications for secure downstream use anytime, anywhere. Founded in 1997, Right Hemisphere is a privately held, venture-funded corporation based in Silicon Valley and Auckland, New Zealand. For more information please visit [www.righthemisphere.com](http://www.righthemisphere.com).

###

The names of companies and products mentioned herein are the trademarks of their respective owners.

Media Contact:

Susan Austin  
Right Hemisphere  
+1-408-266-2322  
[susan.austin@righthemisphere.com](mailto:susan.austin@righthemisphere.com)

